



# DEVELOP FOR VETERANS

with NASA's Applied Sciences' Capacity Building  
**DEVELOP National Program**



Apply existing skills to a  
civilian environment



Bridge the gap between military  
service and your next career



Diversify your resume and professional net-  
work with a respected civilian organization

## About Projects

DEVELOP projects apply Earth observations and remote-sensing technology to application areas that highlight NASA Earth observation capabilities relative to environmental issues for enhanced policy and decision making. These areas include:



Health &  
Air Quality



Disasters



Water  
Resources



Energy



Transportation &  
Infrastructure



Urban  
Development



Ecological  
Forecasting



Agriculture &  
Food Security

## How to Apply

Anyone 18 and over, who is interested in gaining experience in the Earth sciences and remote sensing, is welcome to apply. This includes currently enrolled students, recent college graduates, early and transitioning career professionals, and current and former U.S. Military service members. Applicants must have a minimum 3.0 GPA on a 4.0 scale at their current or last institution of higher learning and transportation to and from the DEVELOP location.

Apply online at <https://develop.larc.nasa.gov/apply.php>.

## Have Questions?

Please contact us with any questions about the program at [NASA-DL-DEVELOP@mail.nasa.gov](mailto:NASA-DL-DEVELOP@mail.nasa.gov).

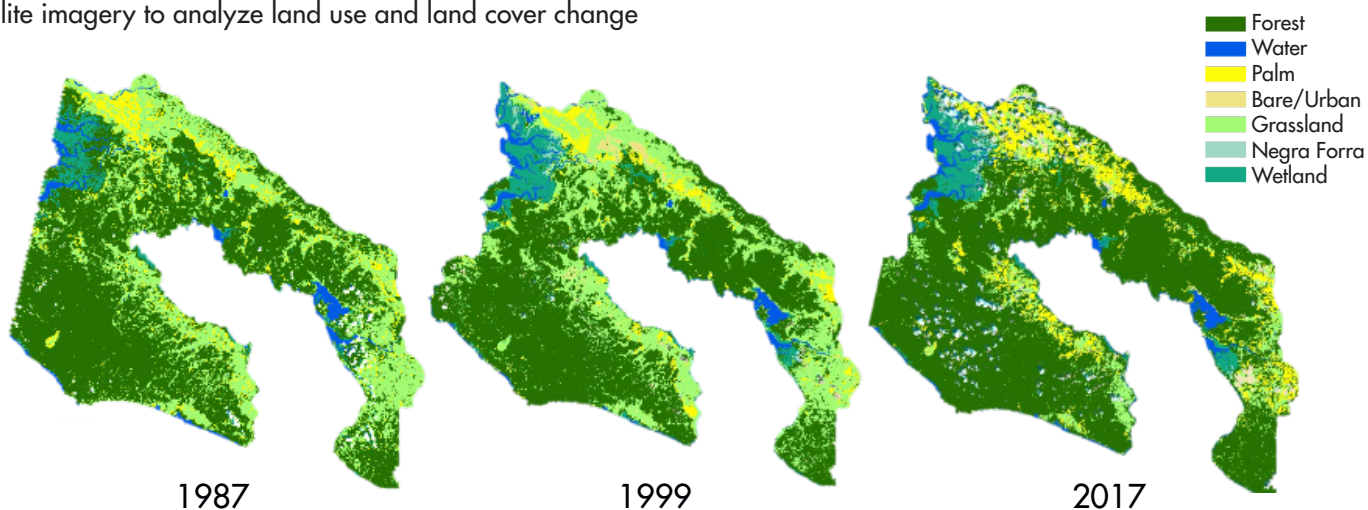


# SCIENCE SERVING SOCIETY

## Osa Peninsula Water Resources

The Osa Peninsula, located in the southern region of Costa Rica's Pacific Coast, is one of the most biologically-diverse places on Earth and is a popular ecotourism destination. However, the area faces watershed degradation and biodiversity loss due to deforestation, pollution from agriculture, and human settlement. This project utilized satellite imagery to analyze land use and land cover change

over time, patterns in water quality, mangrove health, erosion, and deforestation. Osa Conservation will use and distribute results to federal partners and local communities to inform land management decisions, policy enforcement, education and outreach initiatives, and watershed restoration and monitoring.



"This project is really important to assess the implementation of the 1996 Forest Law here in Costa Rica and the value of the protected areas, and how those two interventions really changed the use of landscapes in the Osa region. So we can look at what was going on before and what's happening right now. And that's a really powerful tool for education purposes so we can talk to land managers and decision makers about how those laws and protected areas have been affected. We can also use that information to target areas that we think are going to be perfect for restoration, and so it's a really important decision-making tool for us as a grassroots organization."

--- Andy Whitworth, Osa Conservation

**CURRENT  
LOCATIONS** 

Interested? Apply to participate at one of the DEVELOP locations. For more information on eligibility and a full list of locations, visit us online at <https://develop.larc.nasa.gov>.

