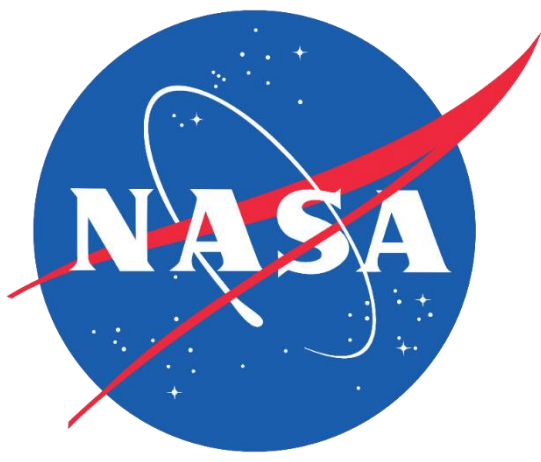




Portland Urban Development

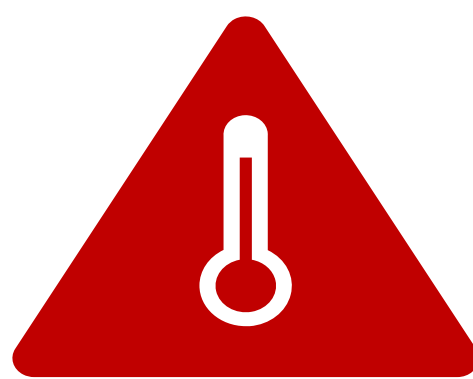
Quantifying and Visualizing Urban Heat with Compounding Vulnerabilities to Support Community Depaving Initiatives



Depave: A Local Change Maker

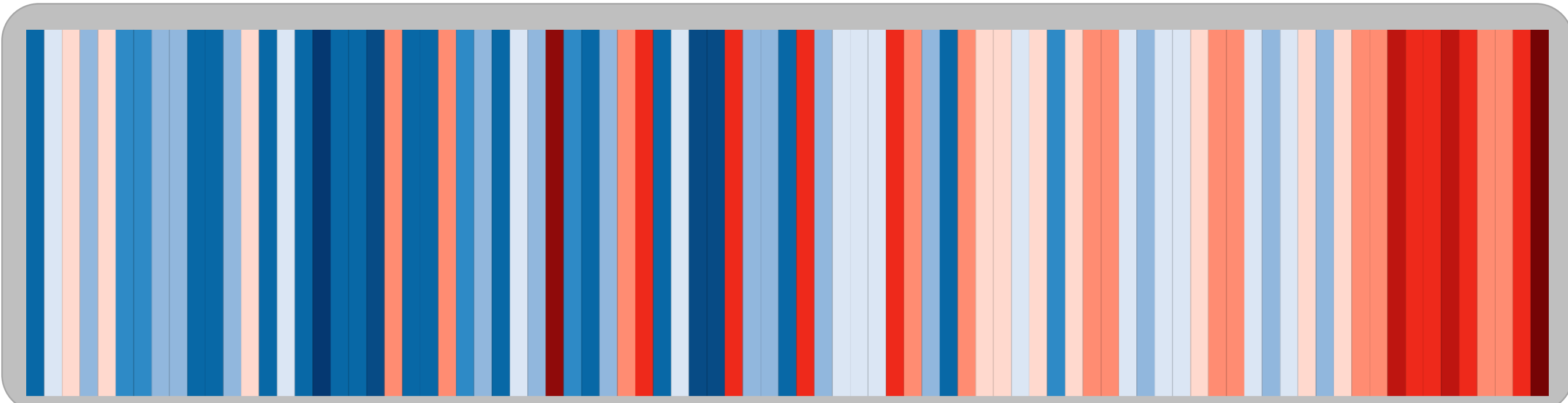
Depave empowers diverse communities by transforming paved areas into vibrant greenspaces and promoting social equity while addressing climate change and urban heat.

Through teamwork and civic engagement, Depave creates lasting change by removing pavement, reducing excess heat and stormwater pollution, restoring habitats, and fostering stronger human-nature relations.



Urban Heat Island Effect

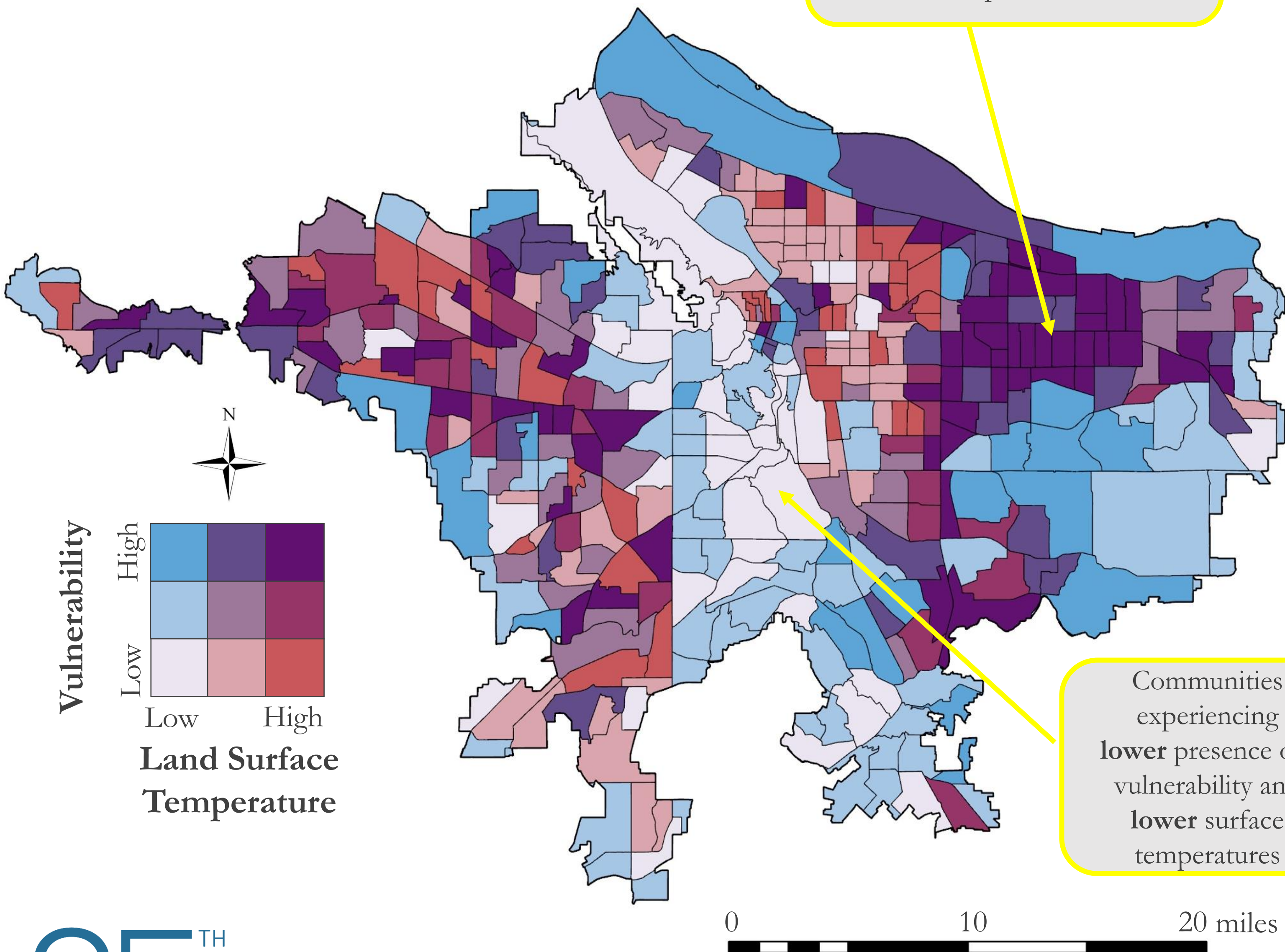
Due to more paved surfaces, cities experience warmer temperatures than surrounding rural areas, and **Portland** is getting **hotter** due to global climate change...



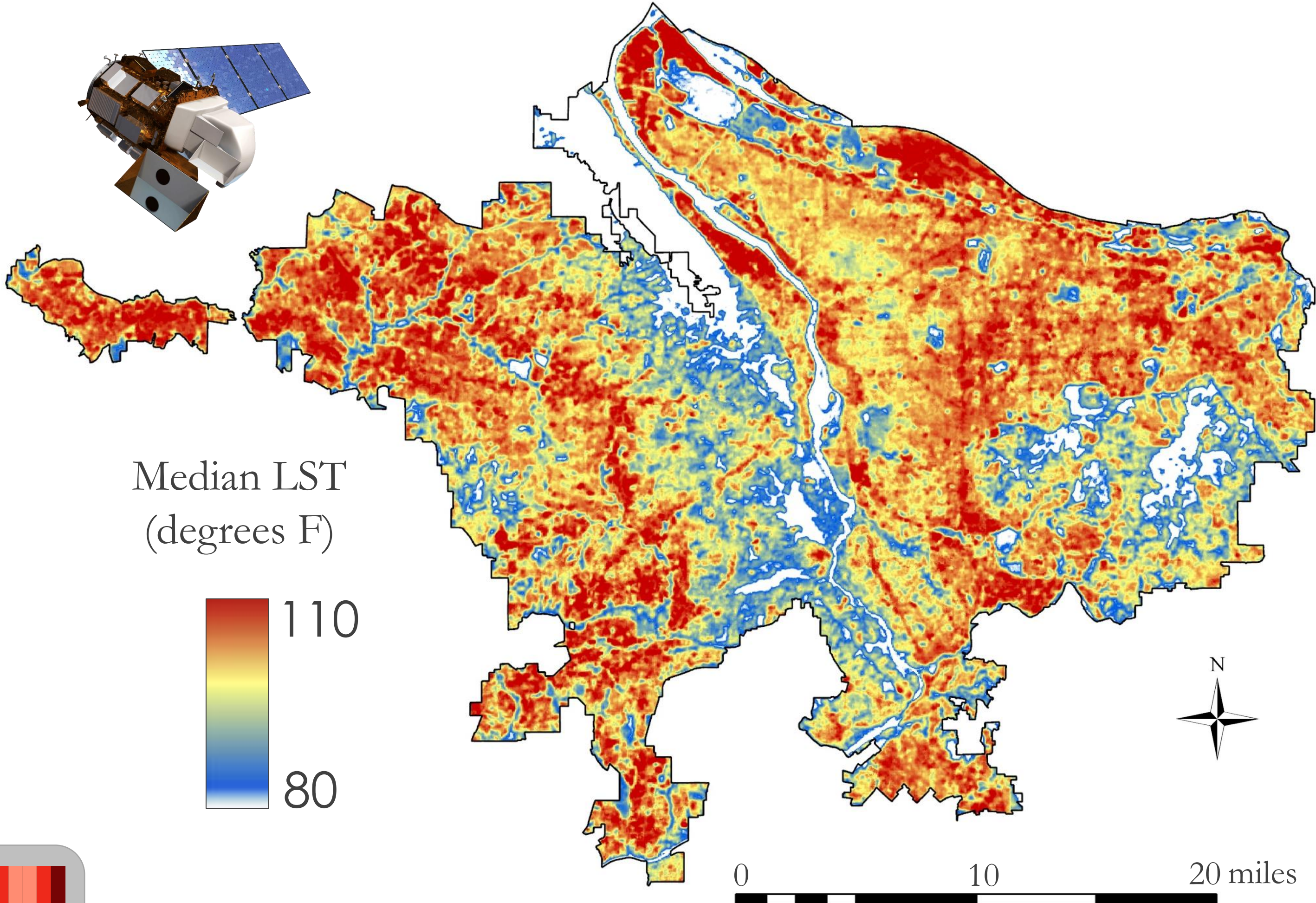
1938 2022

Portland's Frontline Communities Experiencing Extreme Heat

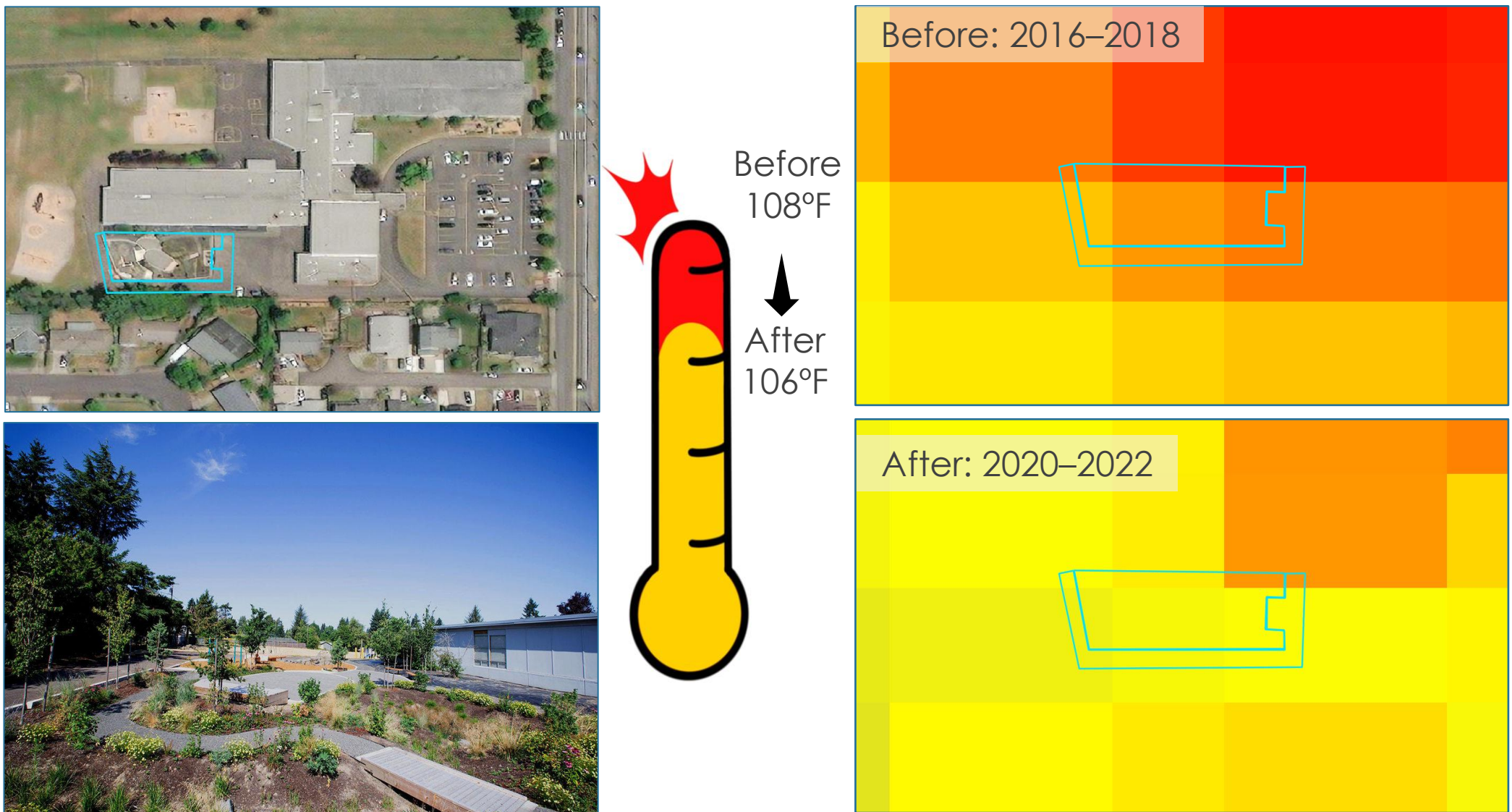
Frontline communities at the intersection of **high** vulnerability and **high** land surface temperatures



Land Surface Temperature of Portland's urban region derived from Landsat 8 TIRS satellite



Case Study: Powell Butte Elementary



Impact: Since 2008, Depave has removed over **250,000 square feet** of pavement in Portland!

Our Team



Keegan Kessler
(Project Lead)



Hadwynne Gross



Jordan Larson



Adam Nayak

Acknowledgements

Fellow: Julianne Liu

Advisors: Lance Watkins, Dr. David Hondula (Arizona State University); Joe Gordon (Oregon Metro); Joshua Applegate (Oregon State University); Dr. Vivek Shandas (Portland State University); Dr. Kent Ross, Lauren Childs-Gleason (NASA Langley)

Partners: Katya Reyna, Katherine Rose, Ted Labbe, Shawn Perez (Depave)