

Project Coordination Webinar:

—

Presentation & Feedback Form

Presentation

What it is:

- A comprehensive “story” of your project

Why it matters:

- Commonly presented at the end-of-term node closeouts
- Content is repackaged for recruiting, conferences, and for future partners and participants
- Will be shared with project partners
- Report to NASA HQ in ASP Program Reviews and SMD Monthly Status Reports - **consistent formatting matters!**

How to make it work for you:

- **Presentation skills** are critical – having good content to practice those skills helps!
- The ability to craft a good PowerPoint presentation is important. Chartsmanship counts!
- Content is often similar to the Poster content – save yourself some time and reuse!
- Presenting your work at a conference, in a classroom, or other events builds your skills and network.

By The Way...

The template's layouts are a guide; feel free to modify it to fit your project.

Presentation Tips & Tricks

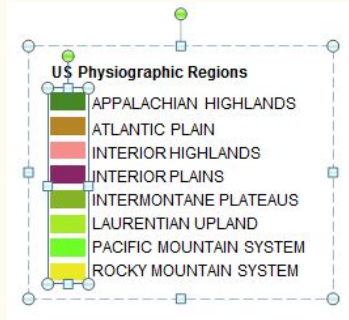
- The 3 R's of Graphics: **Reduce, Reuse, and Recycle** your images and figures!
 - Capture your audience and convey your material with **dynamic** transitions & animations
 - How can you tell a story with your science? Consider the flow, order, and community concerns that drive your project!
-

- Check your formatting!
 - Use align tool & ruler
 - Keep text spacing, bullets, fonts, and colors consistent throughout
 - Present on a big screen to check text sizes & colors
- Pay attention to the template!!!
 - Black, text 1, 25% lighter
- Include **complete** speaker notes
 - Check image licensing for every image
 - Cite **who** took the image, not the website
 - Include image credits on slide & in speaker notes



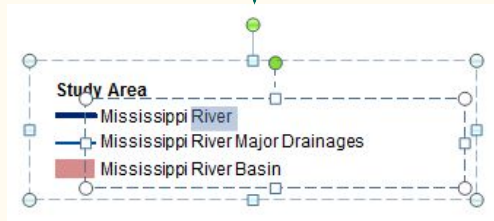
Image Credit: National Park Service / Jeremy M White

Separate and Editable?



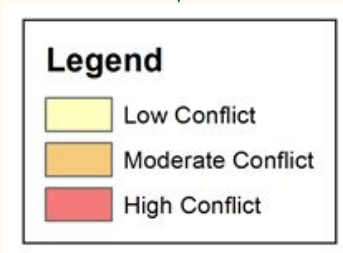
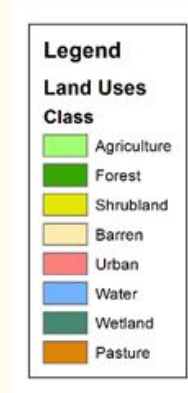
Editable!

Adjusted once
in Microsoft



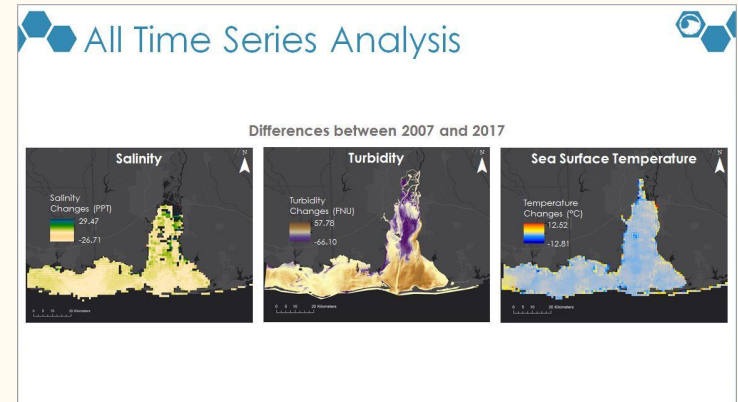
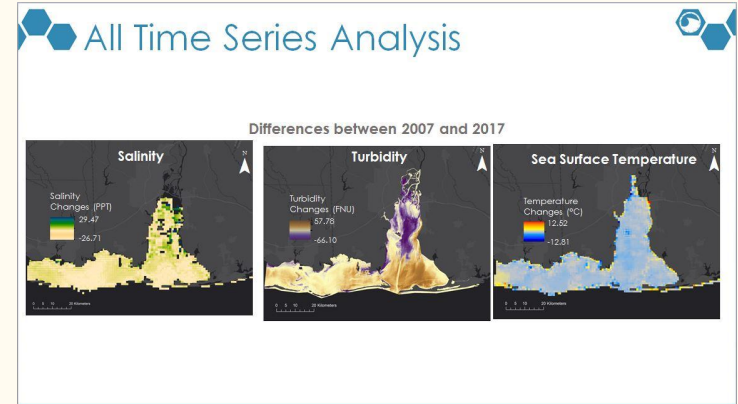
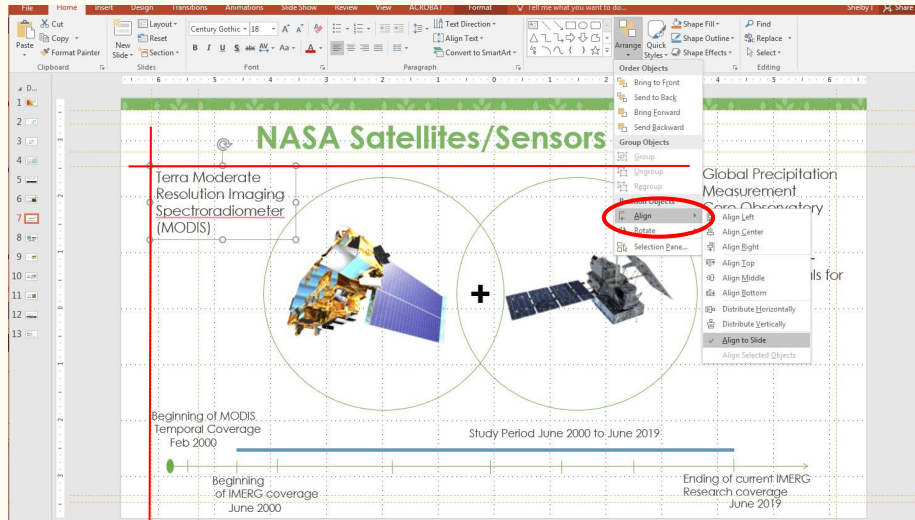
Not editable

Typically just copied
& pasted from
ArcMap



PC's best friend: the align tool

- Use it to **align** text, images, etc.
- It also has a great **distribution** tool!



Presentation Checklist

- ✓ Correct template
- ✓ All images cited
- ✓ Speaker notes complete
- ✓ Strong results and conclusions

By The Way...

Practice the presentation aloud with your team before you submit to make sure your narrative is complete, clear, and concise!

Need ideas? Check out examples on
DEVELOPedia!

Feedback Form

What it is:

- Reports feedback on quality of NASA data, viability of research questions, and partner engagement

Why it matters:

- Headquarters is looking for the wealth of knowledge rapidly gained in DEVELOP projects to feed into Science Teams
- Your knowledge is key for improving satellite missions and DEVELOP partnerships in the future!

How to make it work for you:

- Review the template **NOW** to begin thinking about your responses
- Take notes on these items throughout the term!
- Team discussion relating to these prompts is a great exercise for teams
- Gathering feedback from project partners helps build trust and shows that you value the partners' input

Feedback Form Tips

- Review now and begin to jot down responses to the questions
- Add this to your calendar for Week 10 as a reminder!
- Copy information from other deliverables
 - NASA Earth Observation Data
 - Team Identified Future Work

Website Image

What it is:

- An attractive, processed image of your study area that represents the project

Why it matters:

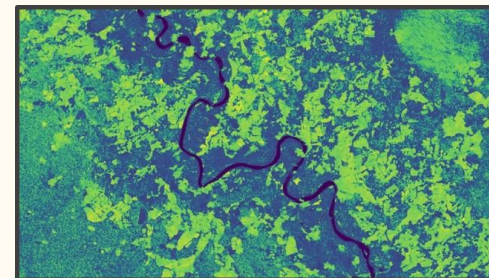
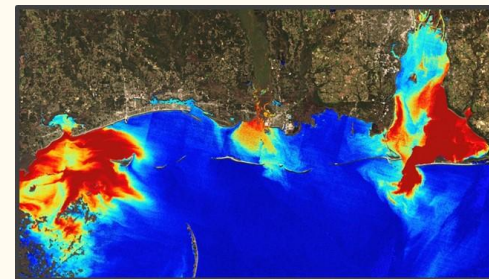
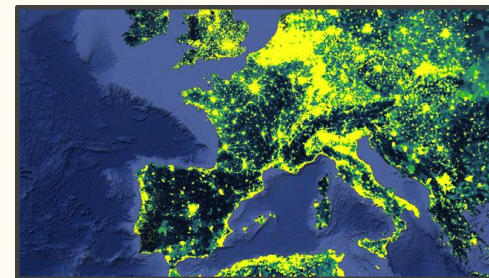
- Website project pages, project booklets, video thumbnails, and the Applied Science Program website

How to make it work for you:

- Effective visualizations of your work can increase the resonance of your project and attract viewers

By the Way...

Do NOT include any text on the image so it can be viewed at multiple scales without distortion.



Your website image should...

1. Use NASA data from 2019 or 2020
2. Include some kind of processing or analysis (NOT just false color!)
3. Have a relevant and informative caption that includes the date and sensor



Remember these 3 things!

Study Area Shapefile

What it is:

- Outlines the study area.

Why it matters:

- Creation of impact maps and the interactive web map
- Shows how program benefits taxpayers and gives insight into where we are building capacity
- Used by ASP when reporting to members of Congress

How to make it work for you:

- Ability to package shapefiles is helpful, and you can reuse this shapefile in the future.

By The Way

1. Must match the study area listed on your Project Summary
2. Create a polygon shapefile of your study area containing only one feature
3. Attribute table should contain "project" field with project short title
4. Zip and save using standard file nomenclature.
5. Coordinate system: GCS_WGS_1984