

DEVELOP YOUR CAREER

with NASA's Applied Sciences' Capacity Building
DEVELOP National Program



Early career professionals



Terms available during the Spring,
Summer and Fall



Choose from a variety of DEVELOP locations

What is DEVELOP?

DEVELOP addresses environmental and public policy issues through interdisciplinary research projects that apply the lens of NASA Earth observations to community concerns around the globe. Bridging the gap between NASA Earth Science and society, DEVELOP builds capacity in both participants and partner organizations to better prepare them to address the challenges that face our society and future generations.

Teams of DEVELOP participants partner with decision makers to conduct rapid feasibility projects that highlight fresh applications of Earth observing missions, cultivate advanced skills, and increase understanding of NASA Earth Science data and technology.

About Projects

DEVELOP projects apply Earth observations and remote sensing technology to application areas that highlight NASA Earth observation capabilities relative to environmental issues for enhanced policy and decision-making. These areas include:



Climate



Ecological
Forecasting



Agriculture



Oceans



Weather



Cross
Cutting



Disasters



Energy



Health &
Air Quality



Water
Resources

How to Apply

Anyone 18 and over who is interested in pursuing experience in the Earth sciences and remote sensing, including currently enrolled students, recent college graduates, early and transitioning career professionals, and current and former U.S. Military service members are eligible to apply. Applicants must have a minimum 3.0 GPA on a 4.0 scale at their current or last institution of higher learning, and the ability to transport themselves to and from the DEVELOP location. Apply online at <http://develop.larc.nasa.gov/apply.html>

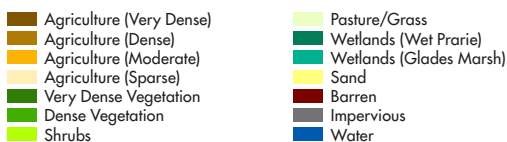
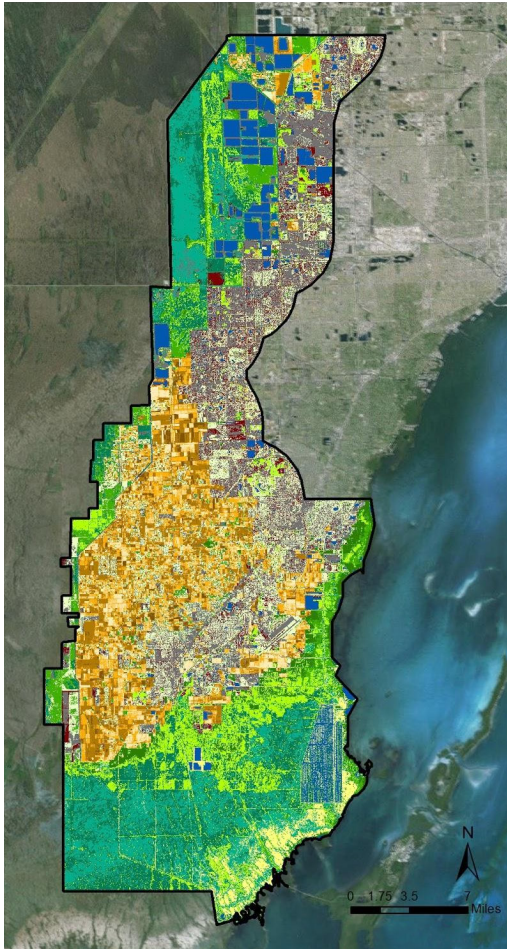
Have Questions?

Please contact us with any questions about the program at
NASA-DL-DEVELOP@mail.nasa.gov or (757) 864-3761.



DEVELOP IMPACTFUL PROJECTS

Here is a recent project
completed by
DEVELOP



Miami-Dade Ecological Forecasting

Miami is a city of rapid and constant change, some of which is at the expense of its neighboring wetland area, the Everglades. As the largest subtropical ecosystem in the United States, the Everglades are located along avian migratory routes and are home to many endemic plant and animal species. The protection and restoration of this region is critical, not only for ecological reasons, but also for the protection of water recharge resources for future urban water consumption by the 2.5 million residents of Miami-Dade County. The Miami-Dade County Parks, Recreation and Open Spaces Department (MDC-PROS) has embarked on an ambitious planning effort in partnership with The Trust for Public Land to develop a Western Greenway system of trails and recreational destinations along the county's western edge. To assist with Greenway planning efforts, this project used NASA satellite imagery

to derive a vegetation index and a land cover classification map which served not only as inputs for the Land-Use Conflict Identification Strategy (LUCIS) model, but also provided tree cover parameters which can help explore more specific design and greenway alignment. Additional land use information from a Miami-Dade County 2013 Land Use Management Application (LUMA) data set provided details for the model on current urban development. Conclusions drawn from the LUCIS model identified the most suitable land for recreation, conservation, and agritourism, with a particular focus on the southern segment, where the majority of agricultural land is located. This project contributed to decision support tools of MDC-PROS and The Trust for Public Land for planning green infrastructure corridors preserving the Everglades.

DEVELOP participants work on dozens of innovative and impactful projects across the country and around the world each year.

CURRENT LOCATIONS

Interested? Apply to participate at one of the DEVELOP locations. For more information on eligibility and a full list of locations, visit us online at www.develop.larc.nasa.gov/about.

