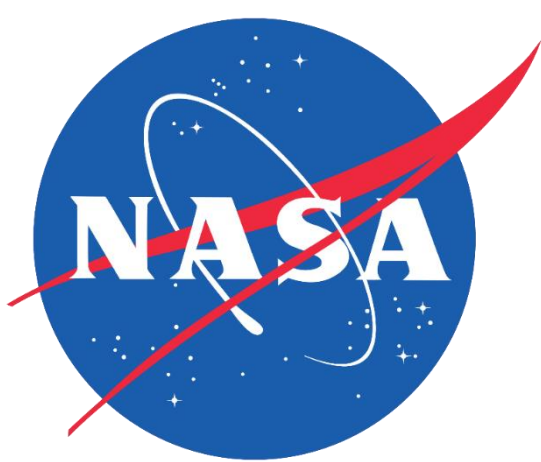




San Joaquin Valley Health & Air Quality

Evaluating the Overlap of Social Vulnerabilities and Air Quality in the San Joaquin Valley Air Pollution District



Why Map Air Quality?

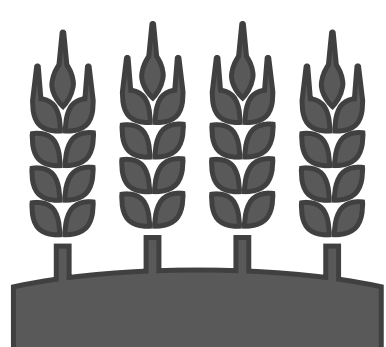
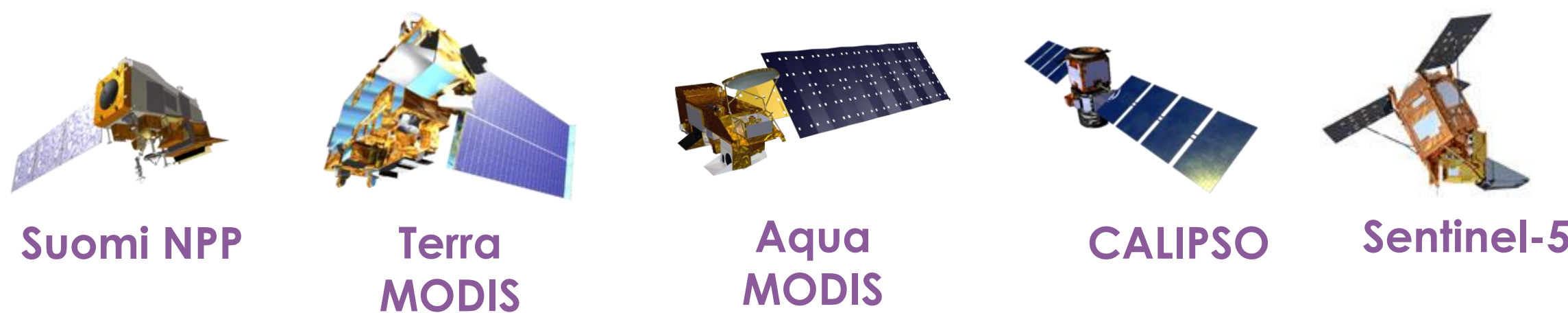


San Joaquin Valley has a long history of air quality challenges, reflected by injustices in resident health and mortality rates.



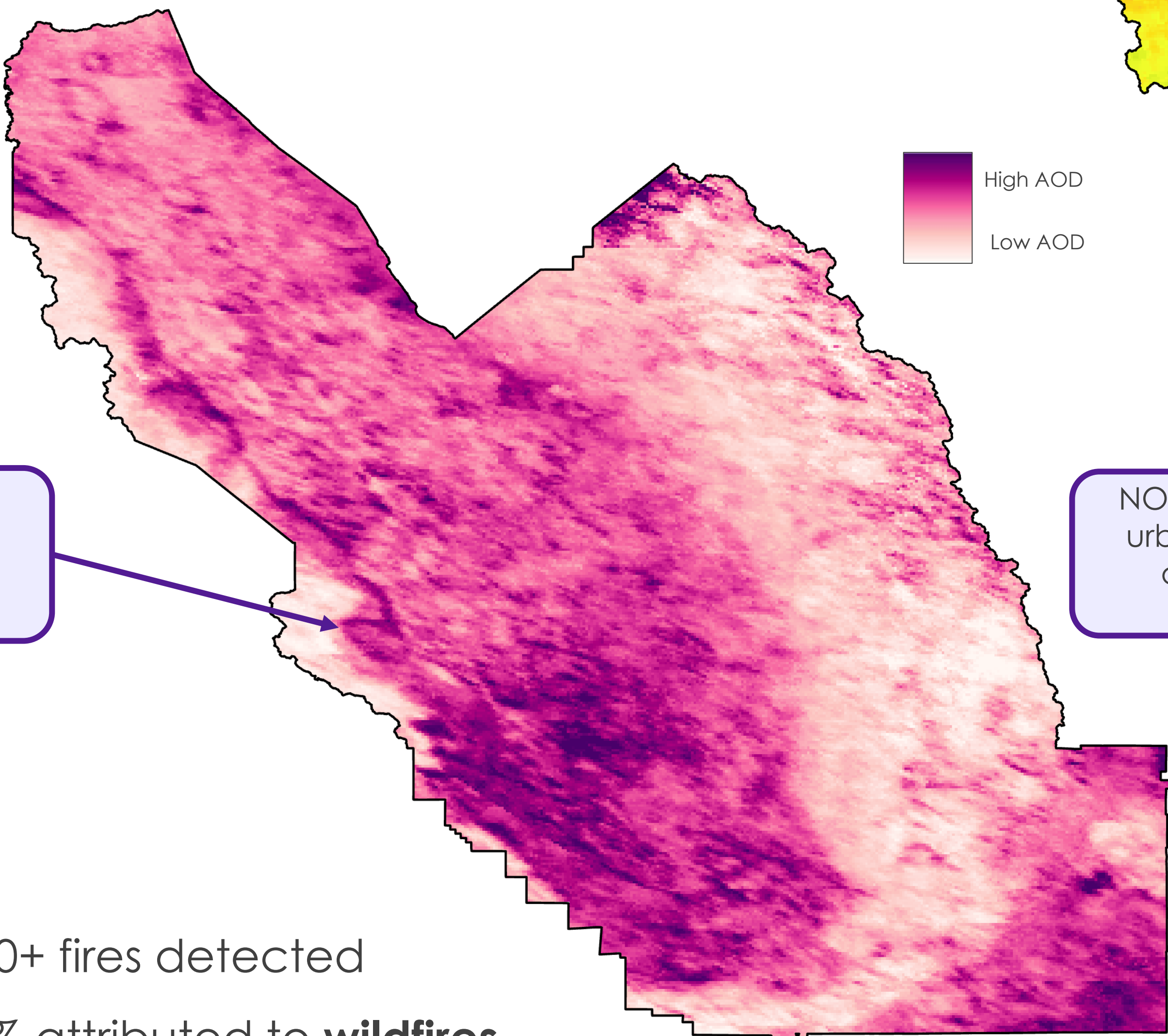
Little Manila Rising (LMR) is a non-profit that advocates for environmental justice and health equity, including air pollution regulations.

Satellite imagery can help identify vulnerable communities impacted by air pollution in the **San Joaquin Valley in California.**



Aerosol Optical Depth (AOD)

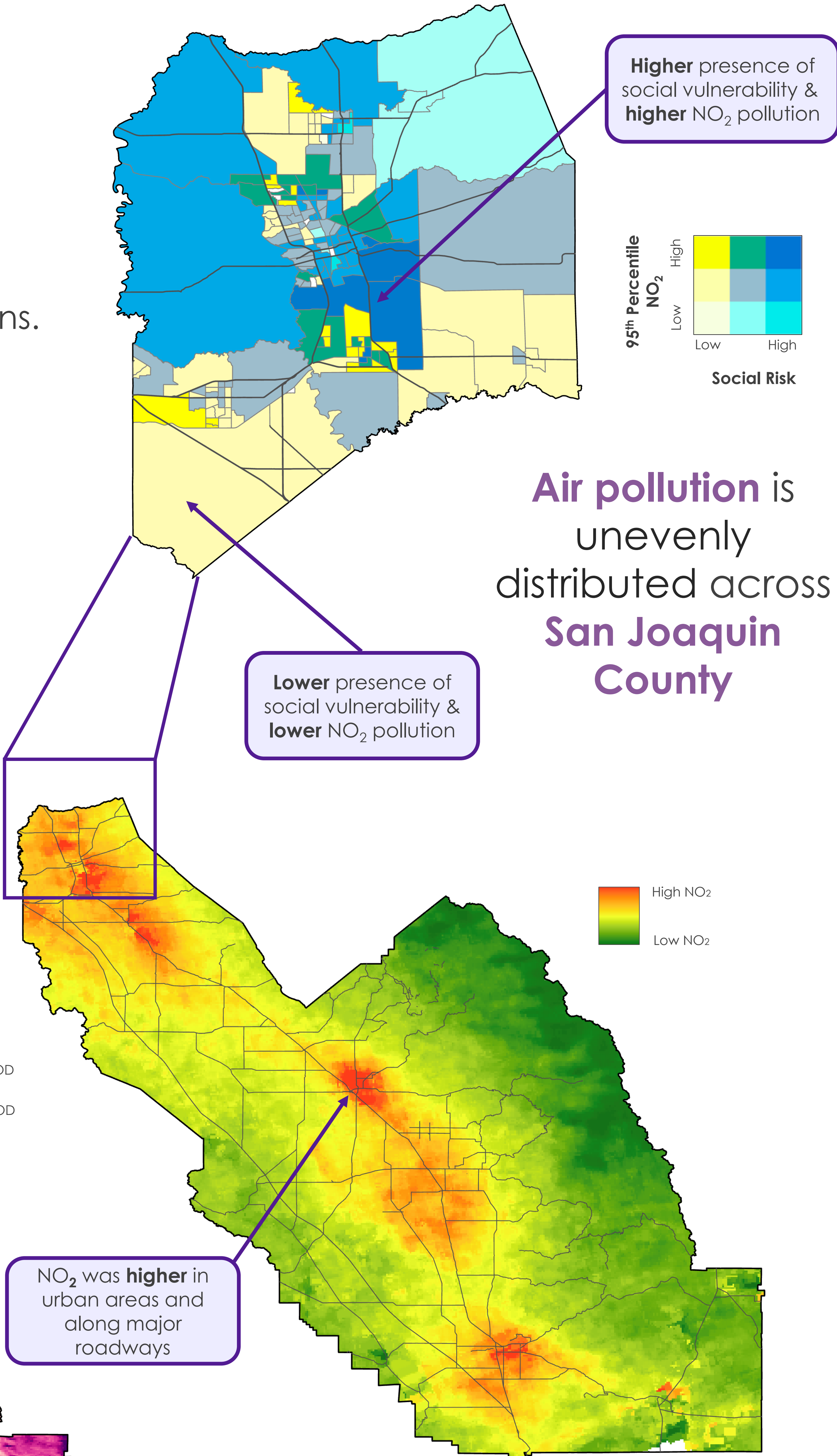
indicates aerosols, such as dust, smoke (i.e., crop burning, wildfires), and other atmospheric pollutants.



In 2021:



25,000+ fires detected
→ 84% attributed to **wildfires**



Air pollution is unevenly distributed across **San Joaquin County**



Nitrogen dioxide (NO₂) is associated with vehicle emissions.

Team Members



Jonathan Szeto
(Project Lead)



Jasper Beardslee



Piper Christian



Bethany MacCarter



Alma Quintero

Acknowledgements

Partners: Jermaine Reece, Little Manila Rising
Advisors: Dr. Kenton Ross, Dr. Travis Toth, Dr. Elizabeth Wiggins, Lauren Childs-Gleason (NASA LaRC), Lance Watkins (Arizona State University)
Fellow: Julianne Liu (DEVELOP VEJ)